

How to Get to Financial Faiz Open House 2026

Address: B-02-36, EmHub, Kota Damansara, 47810 Petaling Jaya, Selangor

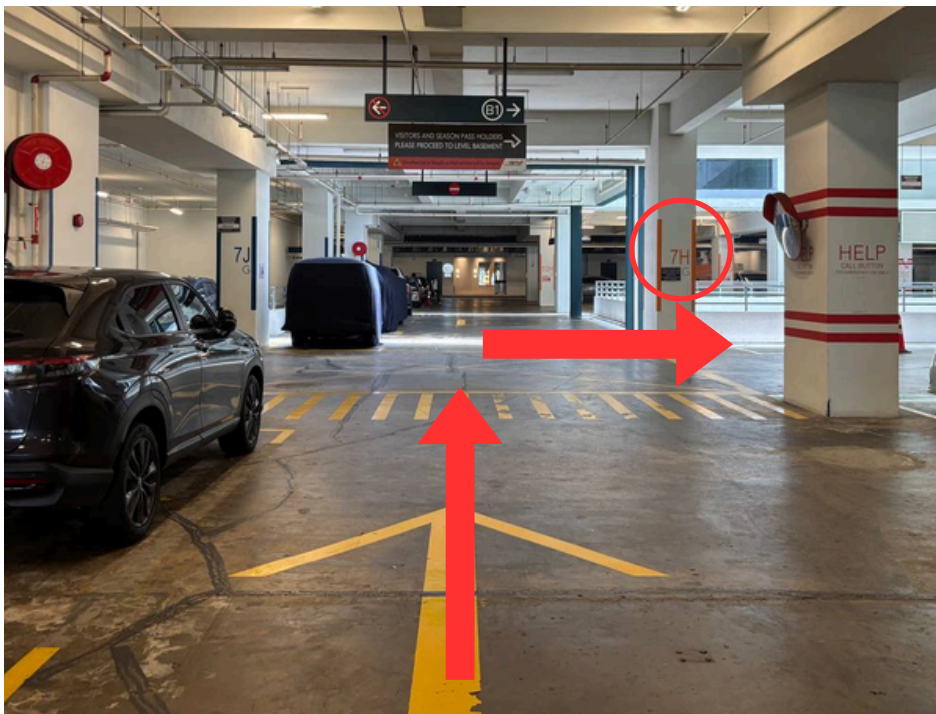
If You're Driving

1. Search on Waze or Google Maps: **“Emhub”**
 - <https://waze.com/ul/hw281zr717>
 - <https://maps.app.goo.gl/99PJz3TQxqugVxgL6>
2. Park at level B1

Entrance 1



1. Stay in the **right lane**. You will see a parking barrier gate ahead.



2. After passing the barrier, go straight until you see Column "**7H G**", then turn right.



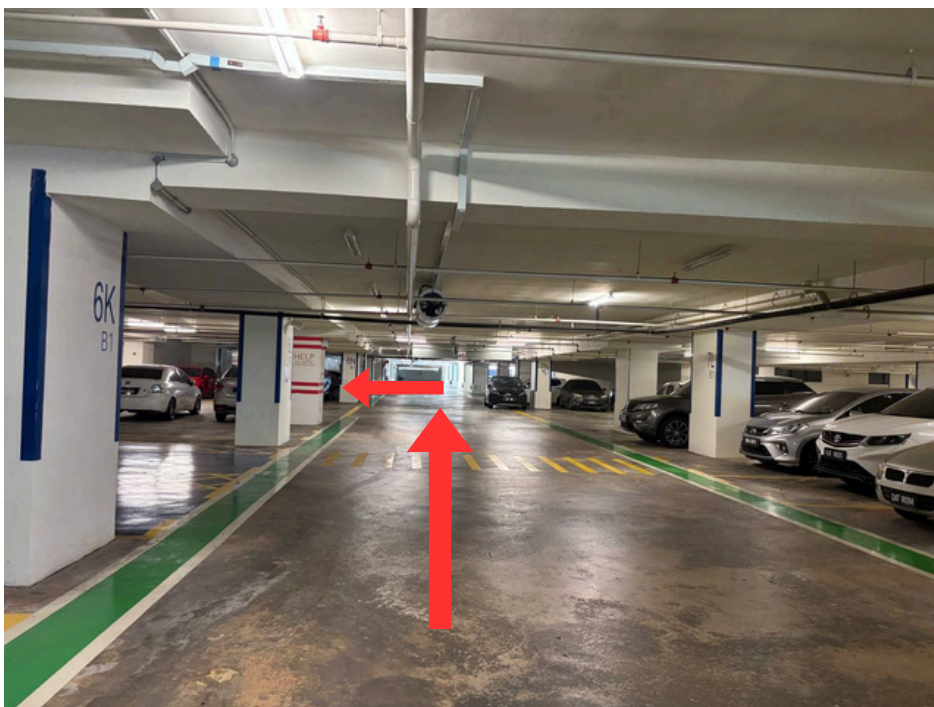
3. Continue straight, then turn left and proceed until you see **SERVICE LOBBY 3A** on your right, then turn left.



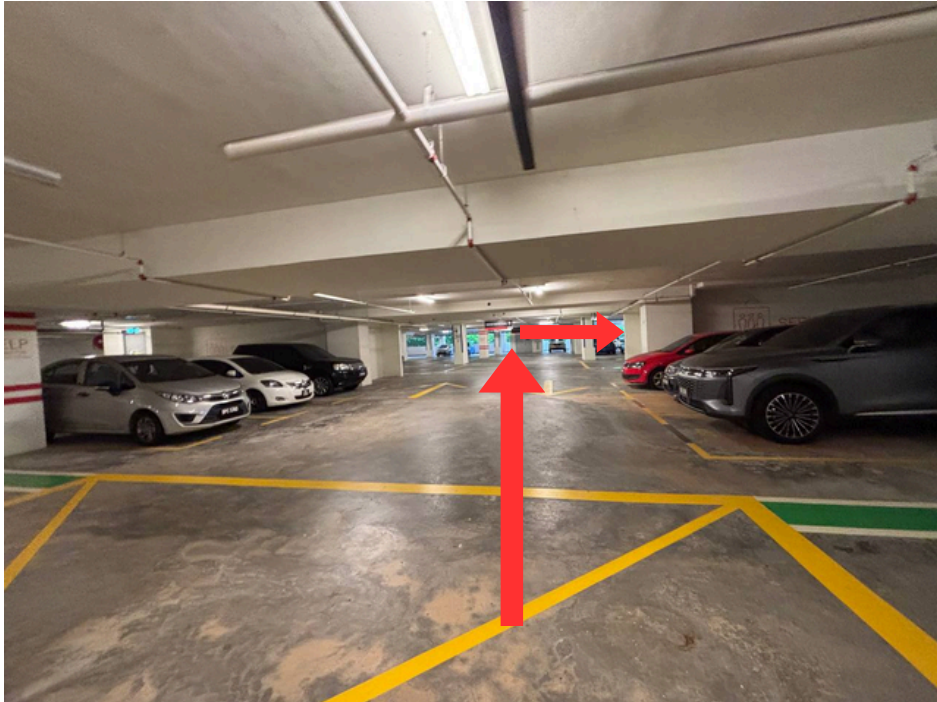
4. Go straight until you reach **SERVICE LOBBY 3 BLOCK A**. Turn left.



5. Go down, then turn right.



6. Continue straight and turn left.



7. Continue straight until the end, then turn right.



8. Go straight until you see **LIFT LOBBY 3 BLOCK B** on your right - you may park in this area. Enter through the door to access the lift.



9. Take the lift and select **Level R**.



10. Exit the lift, turn right and you will see the door. Enter, then turn left.



11. You have arrived at the event hall.

Entrance 2



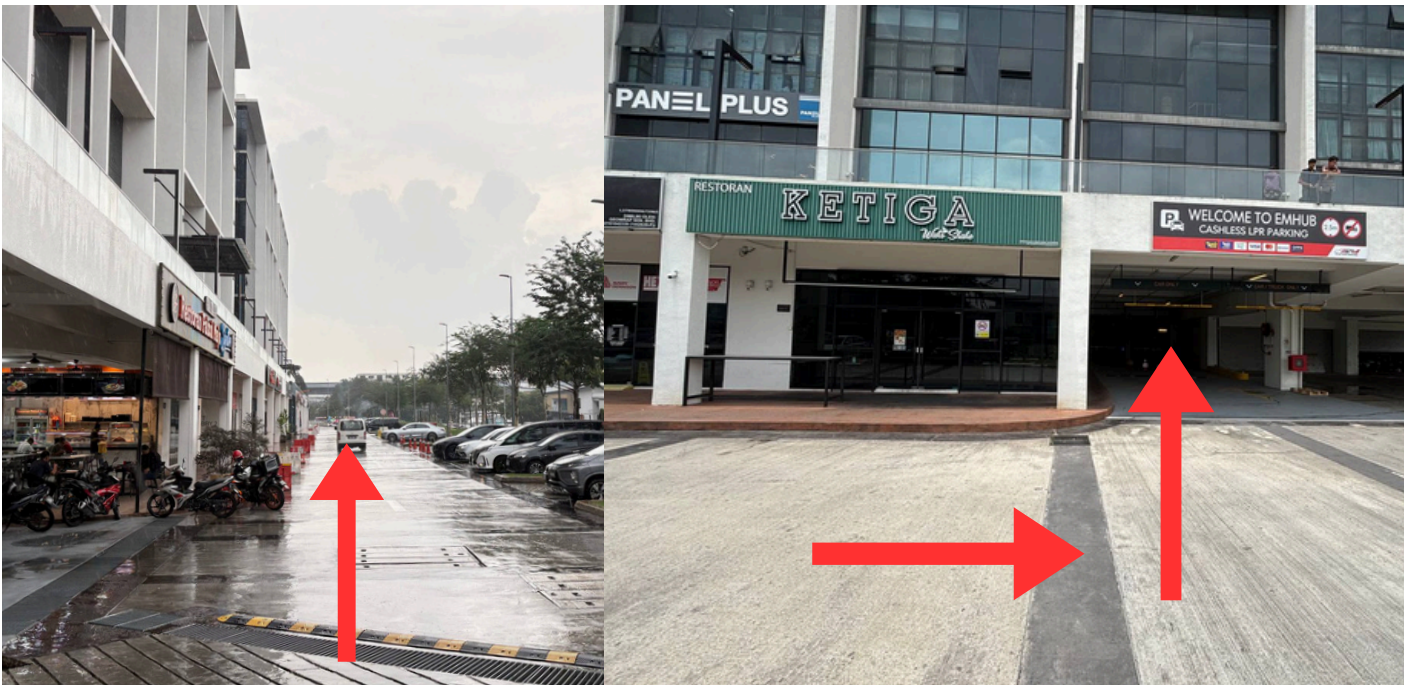
1. Stay in the **left lane** then turn right.



2. Go straight and turn left.



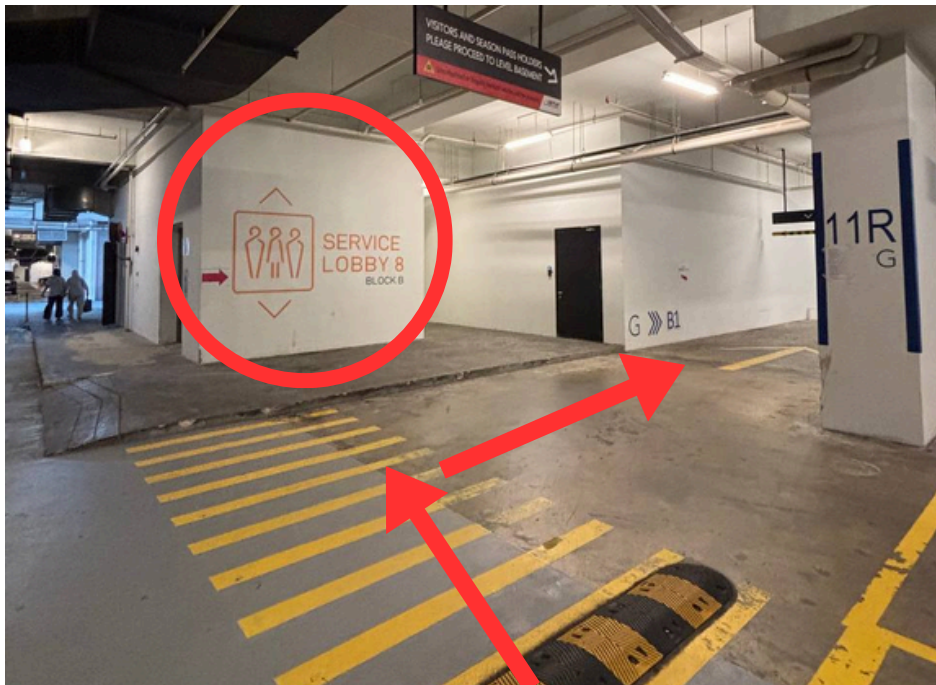
3. Continue straight.



4. Proceed until you see “KETIGA by Waks Shake” on your left, then turn left.



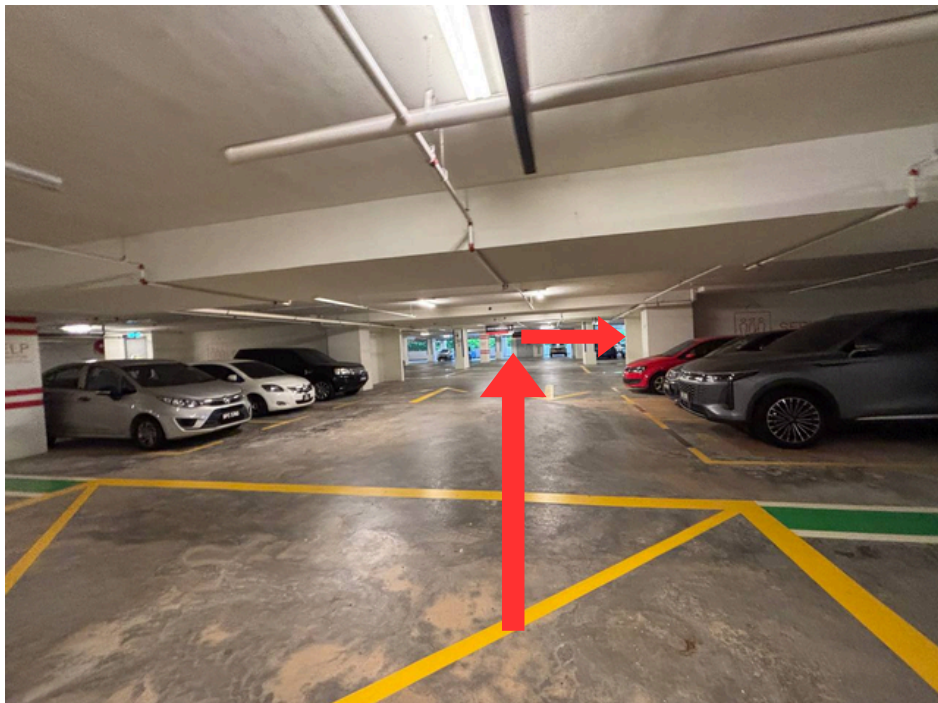
5. Enter the parking area and turn left.



6. Go straight until you find **SERVICE LOBBY 8 BLOCK B**, then turn right to **go to Level B1**.



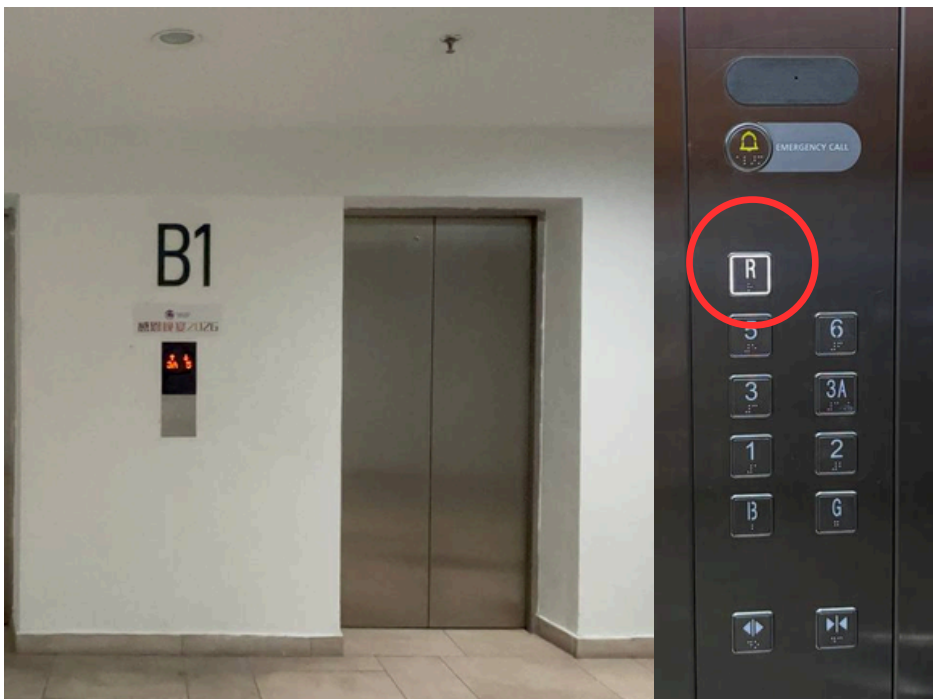
7. Turn left and continue straight until the first junction, then turn right.



8. Go straight until the end, then turn right



9. Go straight until you see LIFT LOBBY 3 BLOCK B on your right - you may park in this area. Enter through the door to access the lift.



10. Take the lift and select **Level R**.



11. Exit the lift, turn right and you will see the door. Enter, then turn left.



12. You have arrived at the event hall.

If You're Taking Grab / Taxi

1. Key in drop-off: **Jubilo Restaurant, Kota Damansara**



2. The driver will drop you off at the **Jubilo Restaurant lobby**.

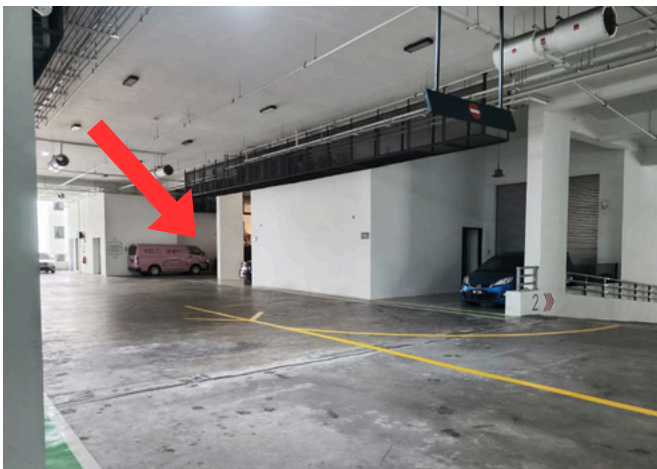


3. Enter the building → Find the lift

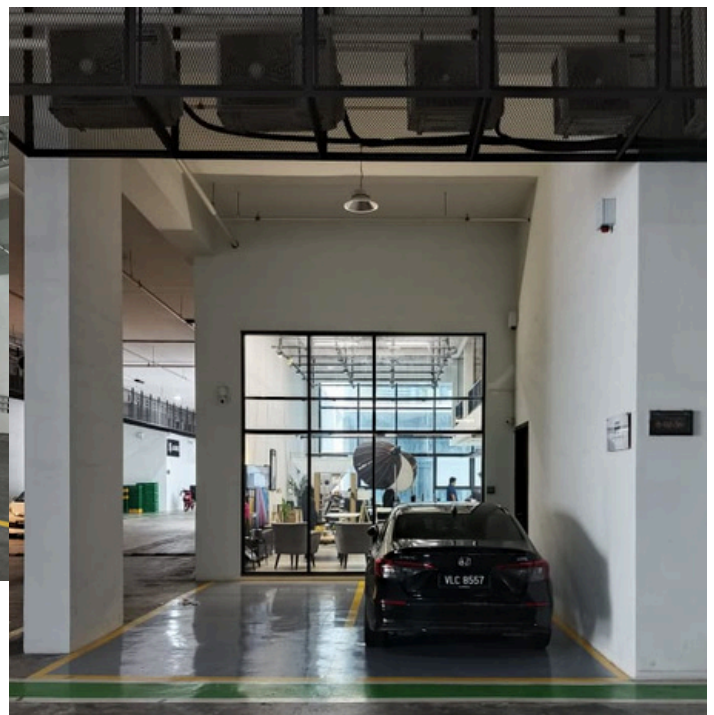


4. Take the lift to the **2nd floor (2)**

5. Once you exit the lift, turn left. Our office will be on your left.



*View outside the door



Landmark Check (to confirm you're at the right place)

- **EmHub Building**
- **Jubilo Restaurant, Kota Damansara (Ground Floor – G)**